



RESIDENZA
RADICE

QUALITÀ DI VITA

TIPOLOGIA 3 | TYP 3
2.5 LOCALI | 2.5 ZIMMER

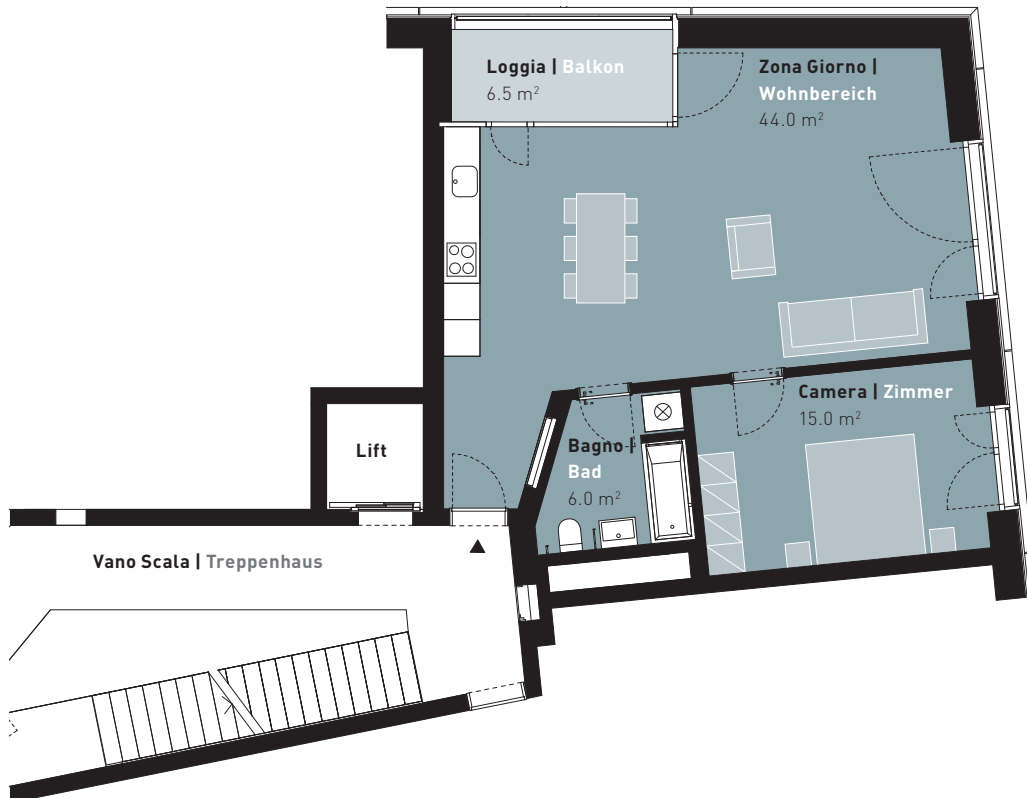
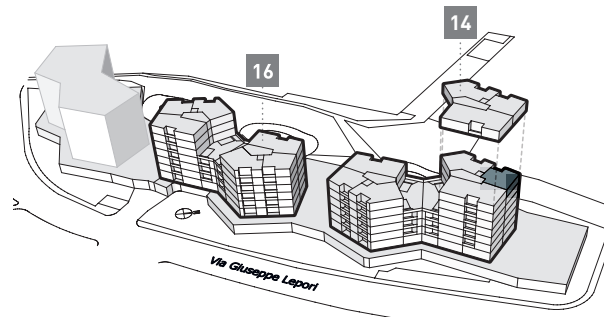
VIA GIUSEPPE LEPORI 14
6° PIANO | 6. OBERGESCHOSS

Dati superficie | Flächenangaben

Superficie abitabile | Wohnfläche: 65.0 m²
Loggia | Loggia: 6.5 m²

Appartamento n° | Wohnungs-Nr.

ML06C2_2



0 1 2 3 4 5m