



RESIDENZA  
**RADICE**

QUALITÀ DI VITA

**TIPOLOGIA 5 | TYP 5**  
**3.5 LOCALI | 3.5 ZIMMER**

**VIA GIUSEPPE LEPORI 14**  
**6° PIANO | 6. OBERGESCHOSS**

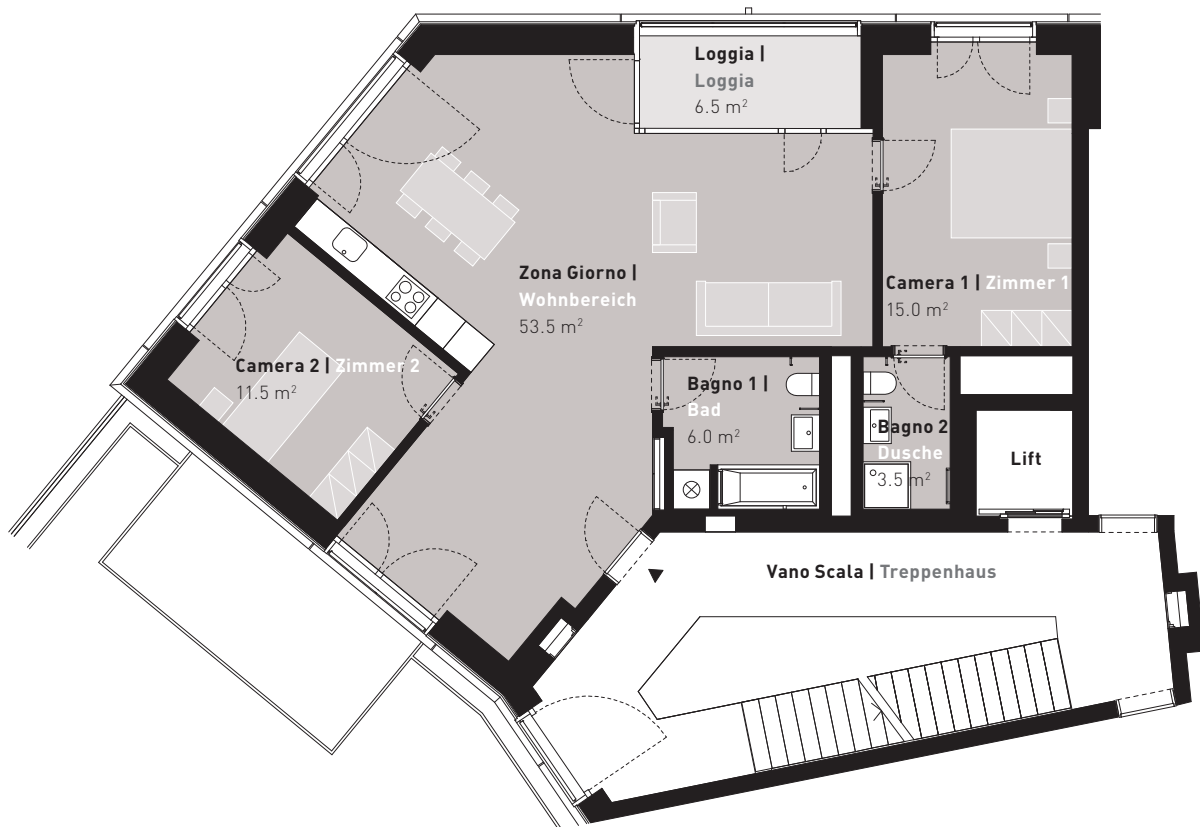
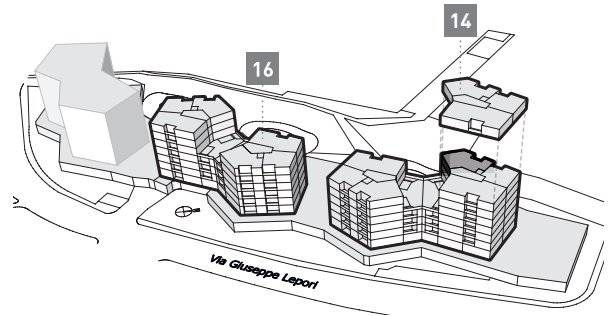
**Dati superficie | Flächenangaben**

Superficie abitabile | Wohnfläche: 89.5 m<sup>2</sup>

Loggia | Loggia: 6.5 m<sup>2</sup>

**Appartamento n° | Wohnungs-Nr.**

ML06C2\_1



0 1 2 3 4 5m