



RESIDENZA  
**RADICE**

QUALITÀ DI VITA

# TIPOLOGIA 7 | TYP 7

## 4.5 LOCALI | 4.5 ZIMMER

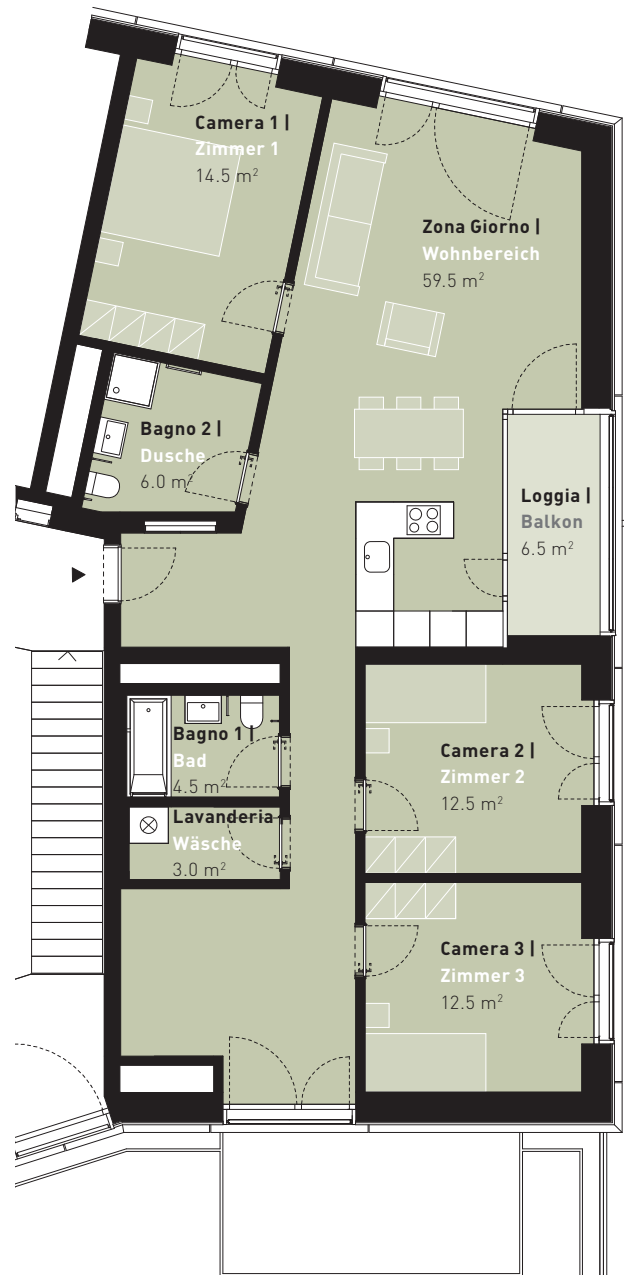
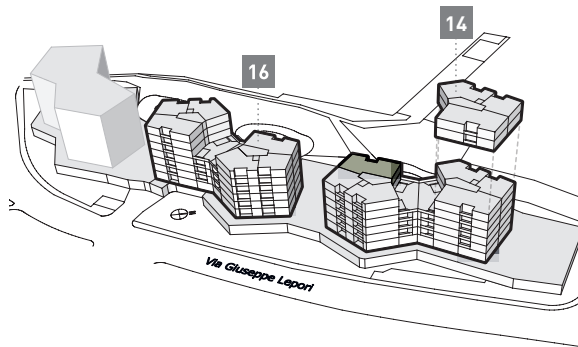
**VIA GIUSEPPE LEPORI 14**  
**5° PIANO | 5. OBERGESCHOSS**

**Dati superficie | Flächenangaben**

Superficie abitabile | Wohnfläche: 112.5 m<sup>2</sup>  
Loggia | Loggia: 6.5 m<sup>2</sup>

**Appartamento n° | Wohnungs-Nr.**

ML05C1\_3



0 1 2 3 4 5m