



RESIDENZA
RADICE

QUALITÀ DI VITA

TIPOLOGIA 6 | TYP 6
3.5 LOCALI | 3.5 ZIMMER

VIA GIUSEPPE LEPORI 14
3° PIANO | 3. OBERGESCHOSS

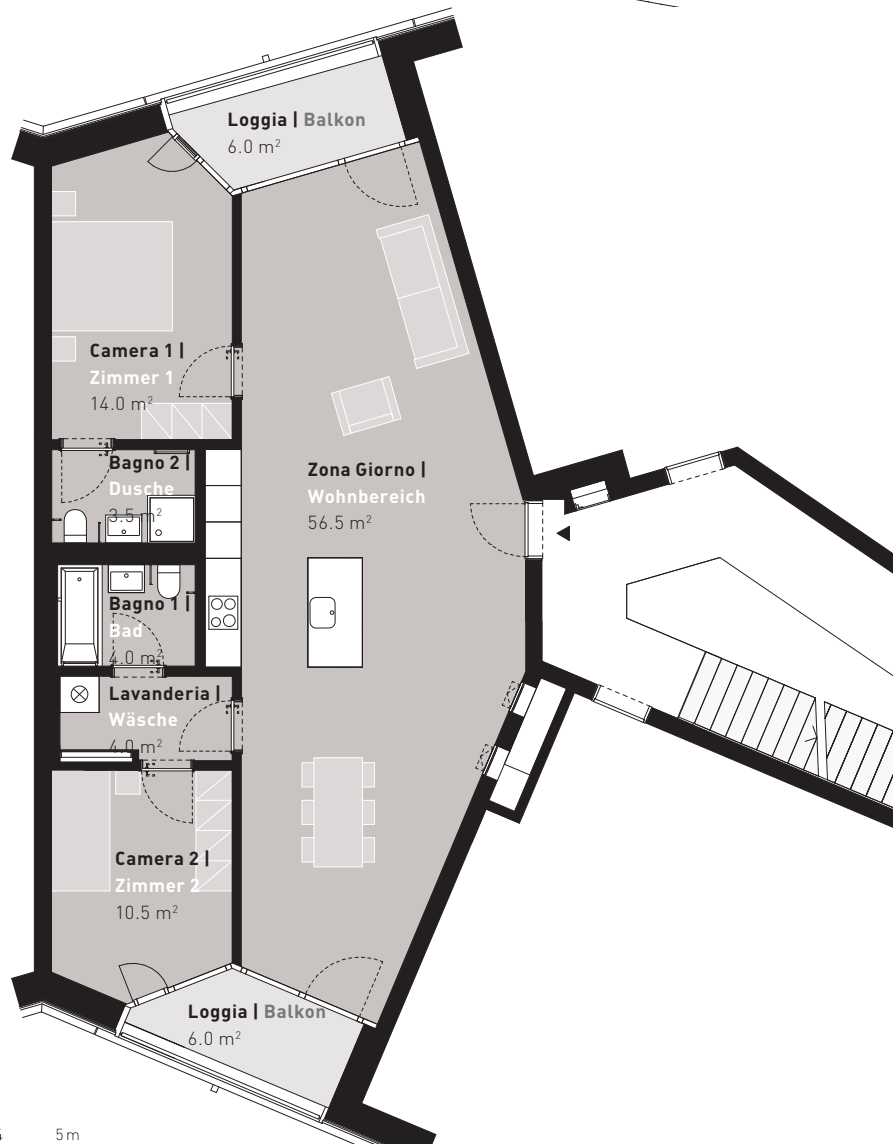
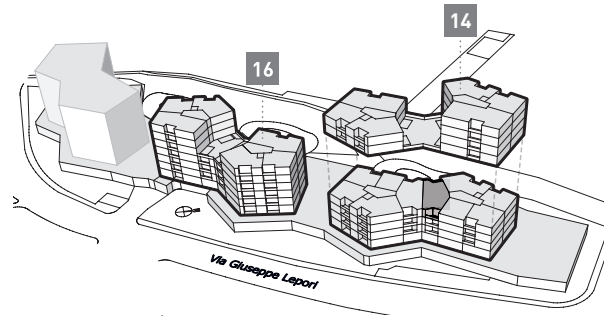
Dati superficie | Flächenangaben

Superficie abitabile | Wohnfläche: 92.5 m²

Loggia | Loggia: 12.0 m²

Appartamento n° | Wohnungs-Nr.

ML03C2_5



0 1 2 3 4 5m