



RESIDENZA
RADICE

QUALITÀ DI VITA

TIPOLOGIA 3 | TYP 3
2.5 LOCALI | 2.5 ZIMMER

VIA GIUSEPPE LEPORI 14
3° PIANO | 3. OBERGESCHOSS

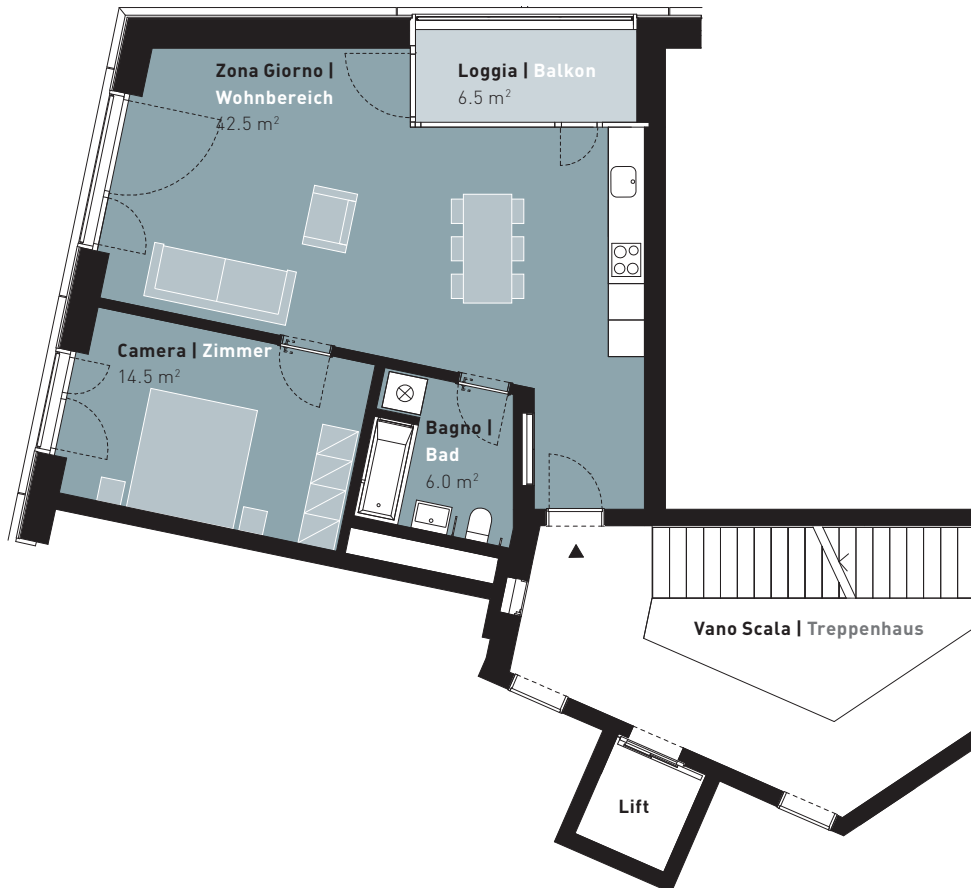
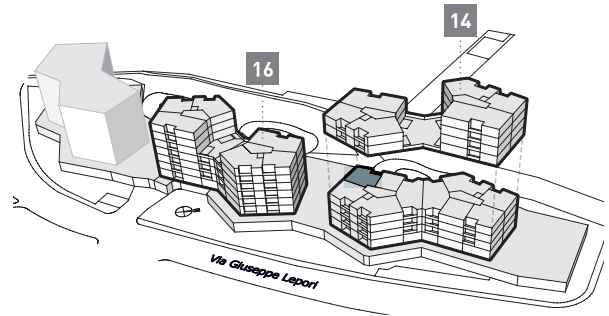
Dati superficie | Flächenangaben

Superficie abitabile | Wohnfläche: 63.0 m²

Loggia | Loggia: 6.5 m²

Appartamento n° | Wohnungs-Nr.

ML03C1_3



0 1 2 3 4 5m