



RESIDENZA  
**RADICE**

QUALITÀ DI VITA

**TIPOLOGIA 7 | TYP 7**  
**4.5 LOCALI | 4.5 ZIMMER**

**VIA GIUSEPPE LEPORI 16**  
**4° PIANO | 4. OBERGESCHOSS**

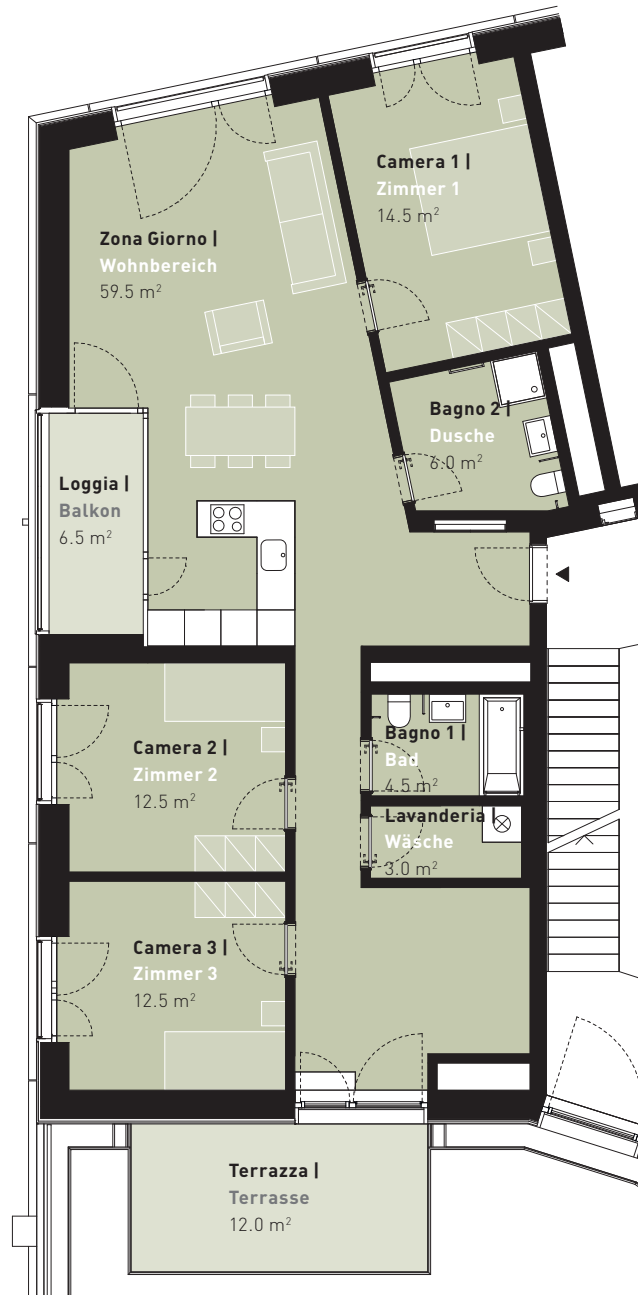
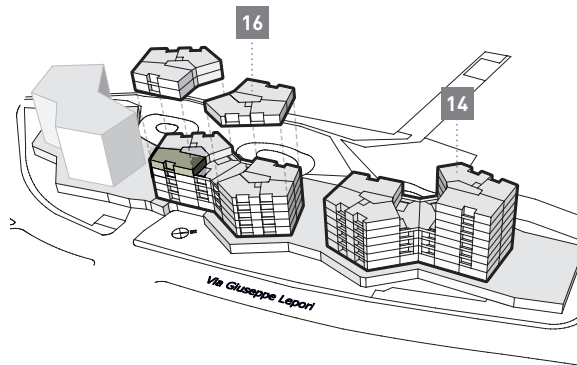
**Dati superficie | Flächenangaben**

Superficie abitabile | Wohnfläche: 112.5 m<sup>2</sup>

Loggia | Loggia: 18.5 m<sup>2</sup>

**Appartamento n° | Wohnungs-Nr.**

ML04B1\_3



0 1 2 3 4 5m