



RESIDENZA
RADICE

QUALITÀ DI VITA

TIPOLOGIA 5 | TYP 5
3.5 LOCALI | 3.5 ZIMMER

VIA GIUSEPPE LEPORI 16
4° PIANO | 4. OBERGESCHOSS

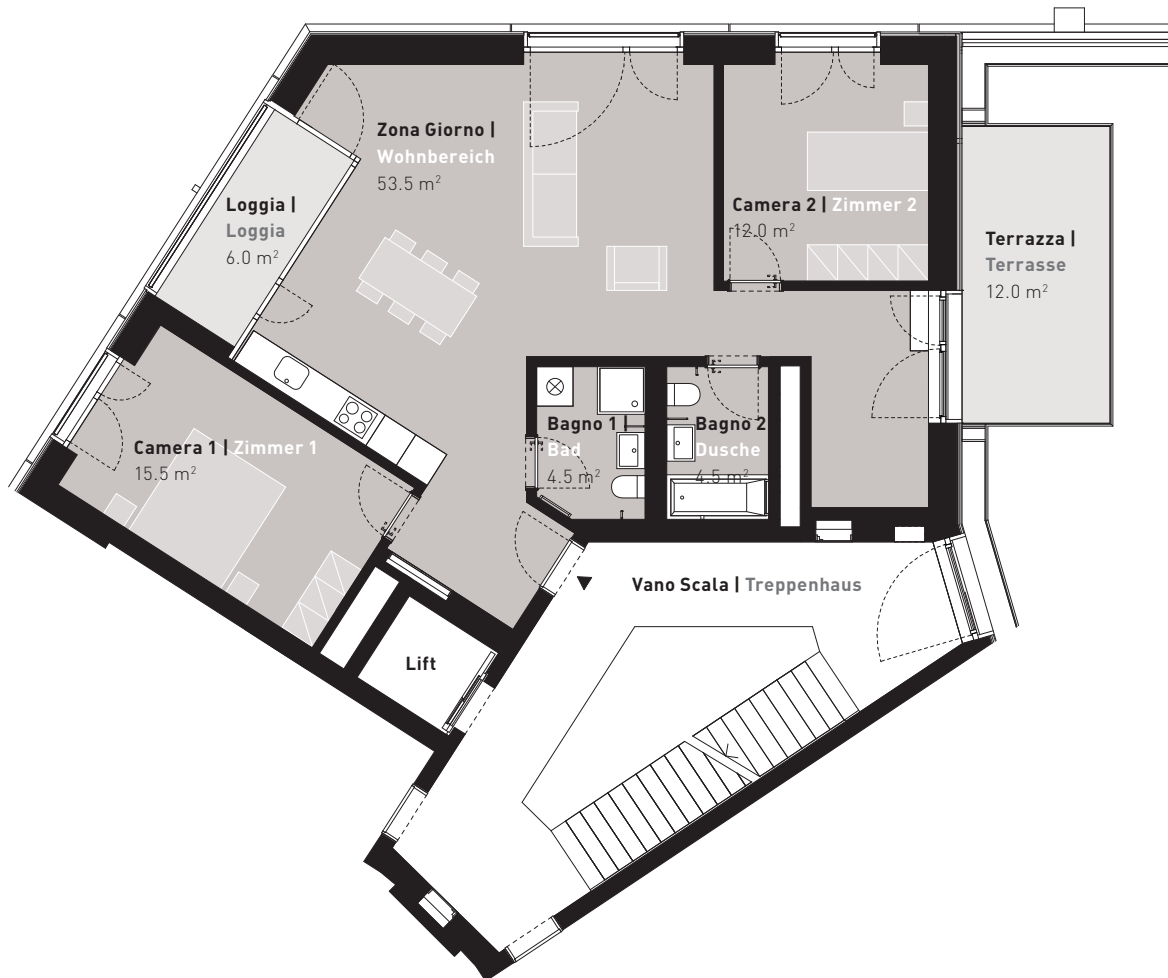
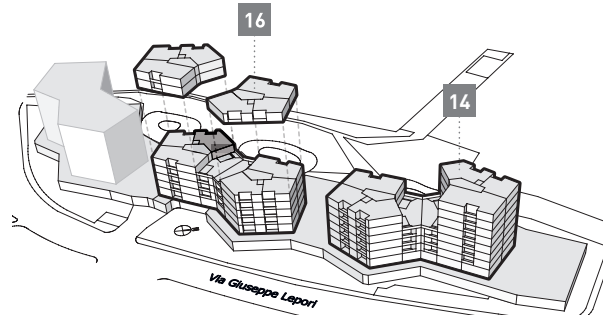
Dati superficie | Flächenangaben

Superficie abitabile | Wohnfläche: 90.0 m²

Loggia | Loggia: 18.0 m²

Appartamento n° | Wohnungs-Nr.

ML04B1_1



0 1 2 3 4 5m