



RESIDENZA
RADICE

QUALITÀ DI VITA

TIPOLOGIA 4 | TYP 4
3.5 LOCALI | 3.5 ZIMMER

VIA GIUSEPPE LEPORI 16
1° PIANO | 1. OBERGESCHOSS

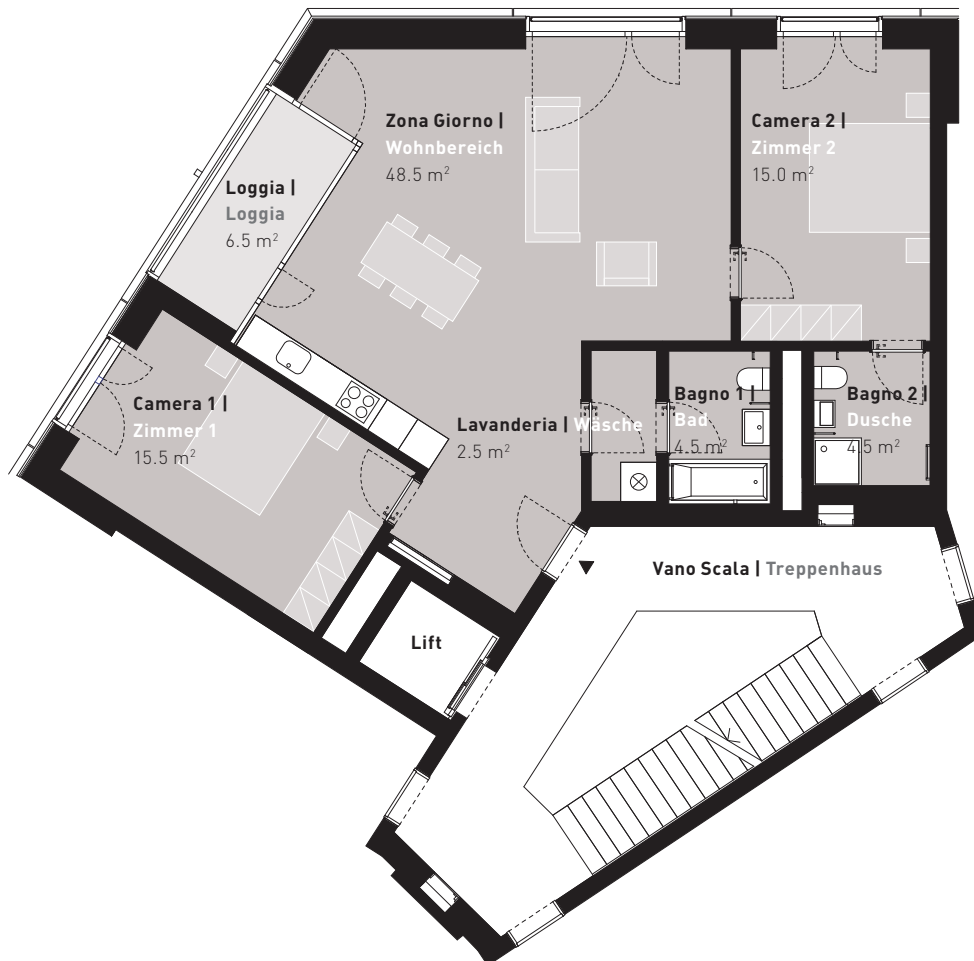
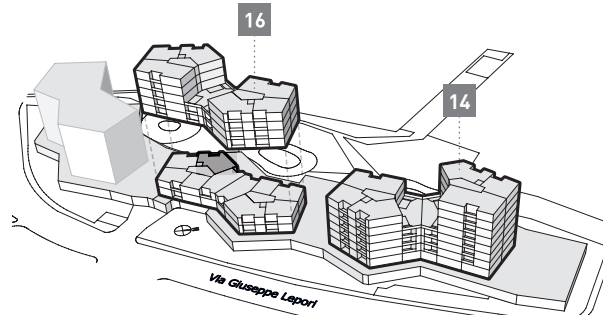
Dati superficie | Flächenangaben

Superficie abitabile | Wohnfläche: 90.5 m²

Loggia | Loggia: 6.5 m²

Appartamento n° | Wohnungs-Nr.

ML01B1_1



0 1 2 3 4 5m